

Intelligent Airwave Lockers

for controlling and auditing access to equipment,
generating management information and much more....

Traka electronic lockers make it easy

Traka intelligent lockers solve organisational issues by firstly controlling who can gain access to Airwave Terminals, and then secondly with RFID tagging, auditing if and when the handset is taken. This ensures full compliance with the Airwave Code of Practice.

All managed simply through our Software (Traka32) running on a Windows PC.

Traka lockers are software controlled. Each handset is fitted with a tiny unique RFID tag. Software controls if, and when, a pre-assigned user can access one, some, all or none of the equipment; if the locker door was opened and exactly when the asset was removed.



Traka software audits the information, along with when the handset was returned – and if you try to return it to the wrong locker – it tells you where to move it to!

Graphical reports quickly identify which handsets are in or out of each locker, when it was used, by whom, and when returned. Additionally any faults or problems reported at the time the handset was returned by the user can immediately be seen on screen, prompting appropriate management action.



Traka lockers come in a variety of sizes and are adapted to meet a wide range of customer requirements. As well as managing control and access to Airwave Terminals they can also house laptops, data terminals, PDA's, attack alarms, cameras, sensors & monitoring equipment, weapons, cash trays, breathalyzers, medical equipment, even specialist tools – in fact almost any portable device that you need to effectively manage and monitor in your organisation.

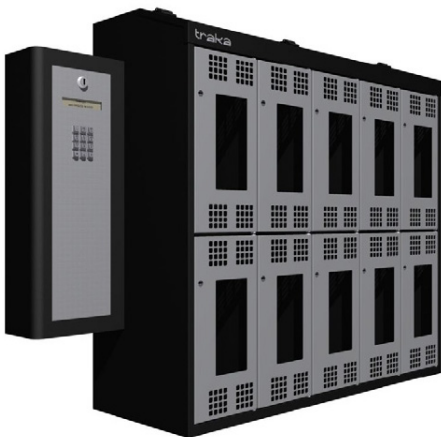
And it's not just about accessing equipment...

- Enforce recalibration and service intervals
- Download data and automatically charge units via a built in docking station
- Ensure only fully charged units can be withdrawn
- Reserve an asset (so no one can take it out before you go to collect it)
- Restrict the times when a user can access the asset (link this to staff shift patterns, weekend working or restricted hours)
- Determine how long the equipment can be out of the locker and in use (curfew)
- Set an alarm to trigger if the asset is not returned after a pre-determined period of time
- Lock out faulty or damaged equipment until it is serviced or repaired
- Identify equipment with a fault history

Any solution is only as good as the benefits it brings to your organisation

With a Traka solution you get these benefits

- Flexible solution – highly scaleable – multiple sets of lockers can be configured
- Local or Remote – multiple locker configurations can be remotely networked
- Simple control – a single windows PC can control the entire configuration
- Easy to manage – sophisticated yet easy to use management reporting
- Quick to access – users identify by PIN, swipe card, proximity reader or biometrics
- Fast to trace – know instantly who has every asset or who used each asset historically
- Know who to contact – imbed details – display contact numbers for each user
- Audit damage - set up fault codes to record user damage or equipment faults
- Manage expiry – set calibration or service intervals – lock out units when expired
- Generate reports – confirm user activity, monitor utilisation, identify faulty units
- Expert installation – dedicated UK based engineers and project managers
- Full user training – on-site initial customer training and refresher training at Traka
- Grows with your business – fully scaleable solution, can extend to thousands of units.



Traka intelligent keyless lockers encourage personal accountability for equipment used, reduce carelessness, increase productivity and can reduce damage and operational costs significantly.

Know instantly who took an asset and when; know when they returned it, and record if it was reported damaged.

Lock out any damaged units; automatically notify managers and schedule servicing or repair.

Traka37 Administrator [System Viewer]

System: Locker [001]
Locker [001] was last updated at 17:36 on Friday 07-Sep-2007.
Position: 1
Access Level: 1 [0001]
The iFob is currently out of the system and was taken by [test_0008] at 12:47 on Friday 07-Sep-2007.

Description	Date/Time	Related user	Who authorised [1]	Who authorised [2]
Fob Returned	14-Aug-2007 08:58:23	Test 00006		
Fob Removed	14-Aug-2007 08:58:23	Test 00006		
Fob Returned	14-Aug-2007 08:54:24	Test 00006		
Fob Removed	14-Aug-2007 08:54:12	Test 00006		
Fob Returned	14-Aug-2007 08:45:24	Test 00006		
Fob Removed	14-Aug-2007 08:45:02	Test 00006		
Fob Returned	14-Aug-2007 08:38:44	Test 00006		
Fob Removed	14-Aug-2007 08:38:28	Test 00006		
Fob Returned	13-Aug-2007 11:35:59	Test 00006		
Fob Returned To Wrong Slot Now Removed	13-Aug-2007 11:35:54	Test 00006		
Fob Returned To Wrong Slot	13-Aug-2007 11:35:40	Test 00006		

11/09/2007 14:42

Find out more about Traka solutions

To request an on-site demonstration of our systems, please contact us using the details below, or visit our web site to see some of our customer solutions at traka.com/video