

Traka Locker Solutions

Traka have two options for providing intelligent management of Lockers.

All options use a special electronic latch lock which has many unique features: opens under load (e.g. if a locker is overfilled), "pops" open the door, self locks when closed and has a mechanical key override for emergency access.

The Traka electronics are available in two versions, Simple Locker Administration and Advanced Locker Administration with software management.

Traka Simple Locker Administration and individual compartment control

These lockers allow the use of PIN access or the optional ability of ID card or even biometrics access. The locker may be configured to allow one time use of each compartment (after use the compartment is reassigned by the next user) or for compartments to be permanently assigned to each user by an administrator. The system includes a real time clock and allows the ability to automatically burst all doors at a set time (perhaps at midnight). There is no link to any computer or database. A short log of each compartment activity may be seen via the keypad and LCD display. This will show time and PIN number or ID card number only.

Optionally the compartments may be fitted with power sockets to allow the use of chargers.

The lockers are easily installed and require little if any training.

The Locker control board supports up to 10 compartments and lockers may be daisy chained together with slave boards up to a maximum of 100 compartments.



Traka Advanced Locker Administration with individual compartment control and audit with Traka32 software

These lockers control and audit the use of every compartment and should be connected to a local computer or network. The contents may be optionally RFID tagged to allow the items to be audited.

Users are firstly enrolled using the Traka32 software and may be provided with access levels to determine which compartments they may have access to. Users may be managed by PIN, card or biometrics and the use of existing access cards is usually available. Optionally the Traka database may be interfaced with the existing Access Control system to simplify the user enrolment and user maintenance.



Every user activity in opening a compartment will be recorded within the Traka database and will be reported using Crystal Reports. Additionally compartment activity may be seen from the keypad attached to each locker.

Users may chose the compartment to be opened but only if they have permission to access that compartment. If only allowed access to a single compartment then the door will open automatically. Compartments may also be reserved using the booking system included in the Traka32 software. One further option allows a user to take ownership of a compartment and for this ownership to be retained until the user has finished with the compartment.

RFID Tagging

Optionally the assets may be tagged with covertly applied RFID tags. Inside each compartment is located a reader which detects the presence of the asset. As a user moves the asset more than about 30mm from the reader, the asset to booked out to the user. When the user returns the asset, the compartment door will automatically open and as the asset is located the system will audibly beep to confirm the asset return and this is confirmed on the LCD display. RFID tagging



allows further options including curfew, where an alarm is created if the item is not returned within a predetermined period of time, Fault Logging where the user is prompted to report any defects or problems with the asset and which in turn is logged in the database ready for maintenance, auto rotation of the asset on the basis of first in first out to ensure that items being returned and placed on charge are rotated to ensure the maximum charging time etc.

Optionally the compartments may be fitted with power sockets to allow the use of chargers.

The lockers require professional installation and training in the use of the software. The lockers may be attached by serial cable to a computer or more usually to a local area network using TCP/IP.

The Traka control board supports up to 540 locker compartments although this is reduced to 100 if RFID asset management is included.

The logistics of locker usage should always be considered and user throughput will determine the number of access points that should be provided.



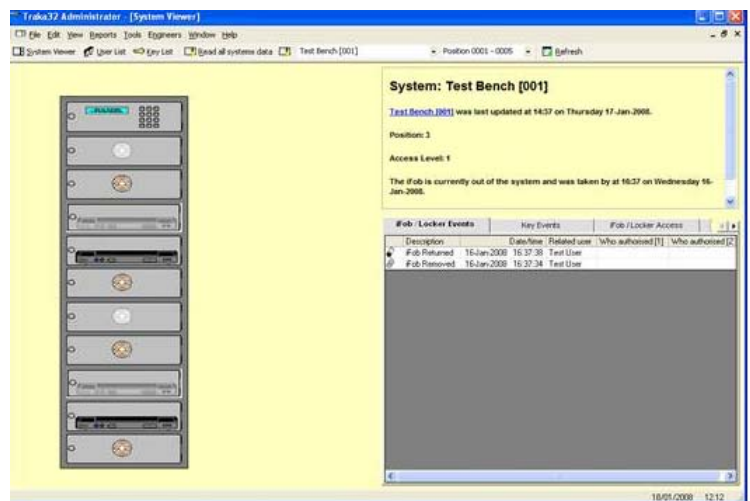
Traka Key Management systems

Traka key management cabinets may also be attached to the network and managed using the same Traka software.

Traka32 software

The Traka32 software provides a graphical representation of the lockers and allows the administrator to easily see the contents and activity of each compartment.

It is supplied with either an Access 2000 database or a SQL Server 2000 database as required.



The software is supplied on a renewable annual licence basis. The annual fee entitles use of the software, unlimited telephone support and free upgrades which may be downloaded from our technical website.