

## Cash in Transit vehicle key and vehicle vault key management

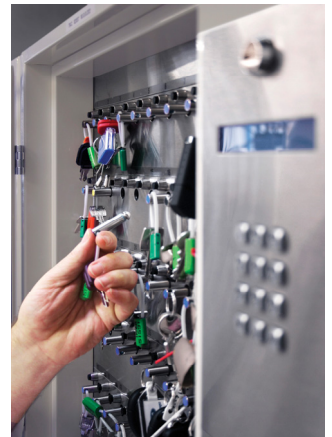
Cash in Transit vehicles have keys for the ignition and for the vaults. To reduce the risk of attack it is essential that the driver *never* carries both the vehicle ignition keys and the vault keys with him/her at the same time.

The Traka solution prevents this from occurring. The system can also be used to ensure that each vehicle to be used is allocated by a supervisor, and this can be at any time up to the moment of use, again ensuring additional security.

Firstly each key is attached to a Traka iFob, using a strong and secure steel seal.

These ignition keys are kept in a Traka cabinet at the vehicle storage depot.

The vault keys are stored at the cash centres in further, separate Traka cabinets.



### In operation

A supervisor will allocate specific drivers to specific vehicles and using the Access Levels feature in the Traka32 software will ensure that only the allocated driver will be able to withdraw the key for the allocated truck. The LED's on the Traka cabinet will show the driver which key to take and he/she will be unable to take any other vehicle keys.

So, if for example the driver is allocated vehicle number 3, as soon as he uses his ID card, verified with a PIN (or using biometrics if preferred) to open the Traka cabinet, the relevant LED will glow Green and all the other LEDs will glow Red. The driver will take the key and commence duty.

When arriving at the first destination (in any order) the driver must take the ignition key from the vehicle, enter the cash centre, use their ID card to open the Traka cabinet and insert the iFob and key into the respective position (say Number 3). This iFob will have been previously paired with iFob number 13 (directly underneath). Now that Number 3 has been inserted, number 13 may be withdrawn but not until number 3 has been inserted. Number 3 will now be securely locked until number 13 is later returned.

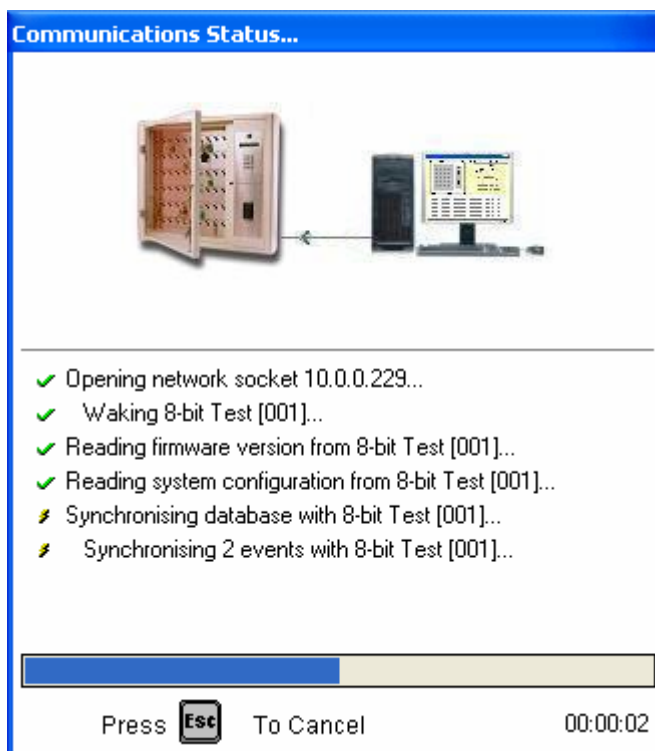
Number 13 will be the key to the vehicle vault. The cash may now be moved. Once completed, the driver must return iFob number 13 and, when correctly returned number 3 may be withdrawn, and the vehicle once again driven to the next destination. This operation will be repeated at all cash centres.

In addition to the vehicle and vault security, there is of course a complete audit trail of the keys being used at each location.

A system is required to allow the allocation of each of the CIT vehicles to a specified driver by the RMS shift manager on a daily basis.

## Solution Proposal

- Using the **Traka32** software the RMS Shift Manager allocates vehicles to specific drivers via communication with the Vehicle Storage cabinet at the base location on a daily basis.



- CIT Driver obtains assigned vehicle key from **Vehicle Storage Depot Traka** cabinet at location 1, by way of Staff Access Control Card and PIN Code.



- The Driver commences the specified route, on completion of one section of the route the driver then proceeds to one of the 4 Drop off /Collection **Cash centres** indicated above.
- Once they have entered each facility, it is a requirement that the driver removes the vehicle ignition keys from the vehicle to allow release of the Vehicle Vault keys from the **Traka** cabinet to dispense or collect a load.



- Once the driver has completed the transaction they must return the vehicle vault key to the **Traka** cabinet to allow release of the related vehicle ignition key.



- **Note:** The vehicle iFob from Location 1 **Traka** cabinet must be paired/release all of the related vehicles vault keys in all the Cash centre locations 2-5 **Traka** cabinets inclusive.

## About Traka...

Traka systems are used extensively in the UK and around the world in more than 30 countries. New systems continue to be developed as new technologies arise. Traka is used in many different market sectors, among them Distribution and MHE Management; Fleet Management; Property Access Control for Hospitals, Libraries and Museums; Casinos; Petrochemical and Mining; Airports, Docks and Railways; Military and Emergency Services and even Royal Households.

### Find out more about Traka solutions ...

To request an on-site demonstration of our systems, please contact us using the details below, or visit our web site to see some of our customer solutions at [traka.com/video](http://traka.com/video)